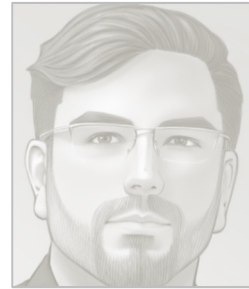

Opening the AI Can of Worms

Creating Counterfeit Humans with AI



Tony O'Driscoll

The **STUDENT ACCESS** Problem

The "One in Five" ACCESS PROBLEM

EGRMGMT 542

Competitive Strategies in Technology Based Industries (CompStrat)
Syllabus: Spring 2024

Professor: Tony O'Driscoll
e-mail: to15@duke.edu

Office Hours: W 1:30-3:00PM

OFFICE HOURS SUPPLY

Available Office Hours = $90m * 14w = 21H$

OFFICE HOURS DEMAND

Required Office Hours = $420s * 15m = 105H$

The "Anytime" SOLUTION

EGRMGMT 542

Competitive Strategies in Technology Based Industries (CompStrat)
Syllabus: Fall 2024

Professor: Tony O'Driscoll
e-mail: to15@duke.edu

Office Hours: 24x7 click [HERE](#) to ACCESS ProfTonyAI



The **DOPPLEGANGER** Creation Process

JSONification
(Data)

Contextualization
(Context)

Promptification
(In-Formation)

UXification
(Interaction)

- Class PPTs
- Lecture Audio

Virtual Office
Hours

Persona
Crafting

Text
Interface

- 100+ Articles
- 2 Books

Theory/Model
Exploration

Context &
Constraints

Text/Audio
Interface

- 20+ Keynotes
- 23+ Webinars
- 30+ Podcasts

"Cuppa"
Contemplation
Chat

Chain of
Thought

Benevolent
Parenting

Audio/Avatar
Interface

ProfTONYAI Cuppa Contemplation Chat

"Cartoony"



"Creepy"



"Just-Right?"

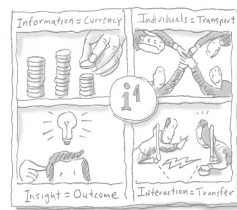
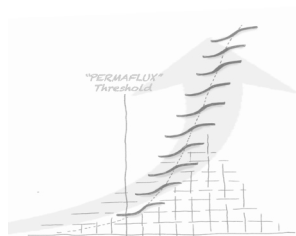


Go Raibh Mile Maith Agat!



Opening the AI Can of Worms

Making Learning Meaningful in a
Transition Between Worlds



Tony O'Driscoll (Words)

Gary Zamchick/GPT 4 (Images)

*The Liminal
Space*

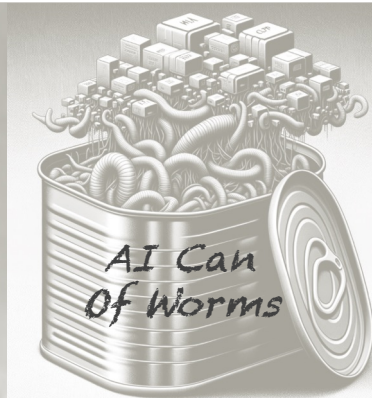
*The Permaflux
Threshold*

*Generative
Learning*

*Collective
Sense Making*



The **LIMINAL SPACE**: Where things no longer **MAKE SENSE**



What **WAS**

What **WILL BE**

Prior World

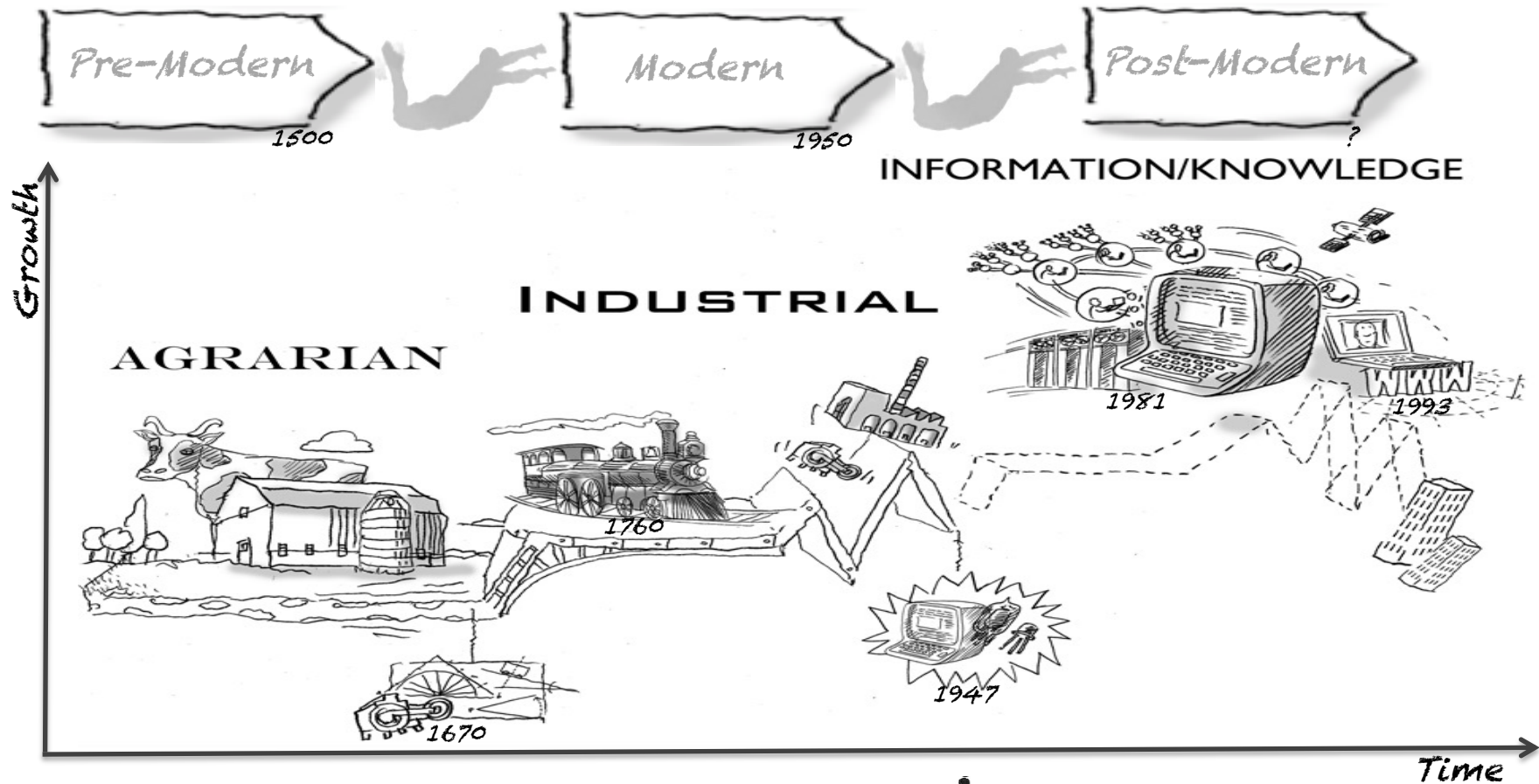
Emergent World

"No **Longer**"

"Not **Yet**"

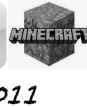
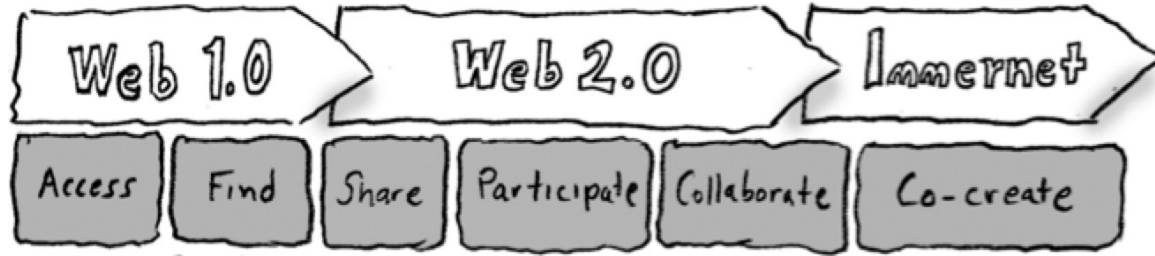


Prior Liminal **JUMPS** in **IDEAS** and **INNOVATIONS**



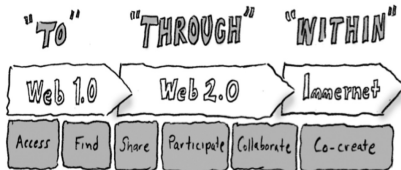
Our EMERGENT IMMERNET Reality

"TO" "THROUGH" "WITHIN"



FIRST Pause to PONDER

How might we **LEARN** to **MAKE SENSE**
of an **EMERGING IMMERNET WORLD**
we can **BARELY IMAGINE?**



The Liminal
Space

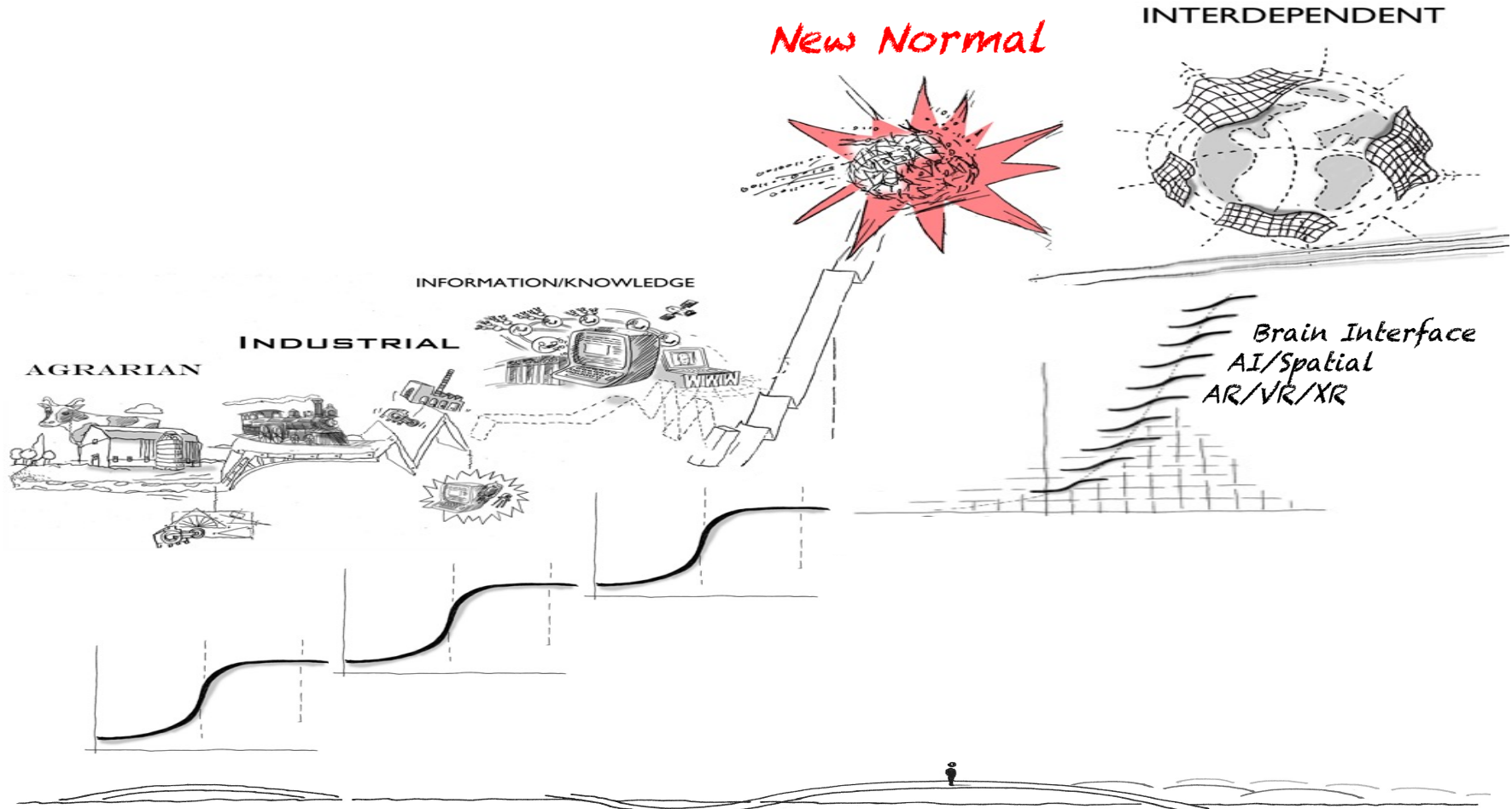
"PERMAFLUX"
Threshold
The Permaflux
Threshold

Generative
Learning

Collective
Sense Making



A NEW-NORMAL of Constant DISEQUILIBIRUM



DISRUPTIVE Waves beyond the PERMAFLUX THRESHOLD



Accelerative

The disruption pulls many of the trends we have been studying forward on a faster timeline than previously estimated

Paradigmatic

The disruption opens up a portal to a future that is entirely different than what we could have previously imagined

SECOND Pause to PONDER

How might we **LEARN** to
NAVIGATE LIFE beyond the
PERMAFLUX THRESHOLD?



The Liminal
Space

"PERMAFLUX"
Threshold
The Permaflux
Threshold

Generative
Learning

Collective
Sense Making

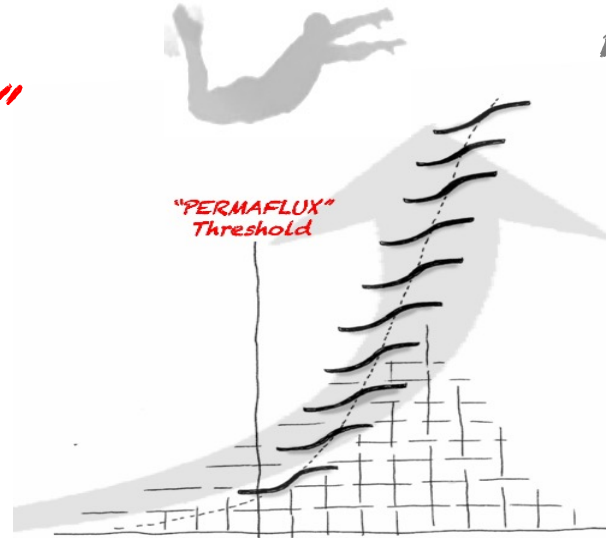


What does Learning **MEAN** beyond the **PF Threshold**?

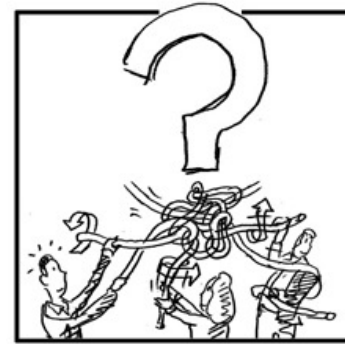
Prior World
"Find-It Out"



"PRODUCTIVE" learning focused on driving **INDIVIDUAL** human **CONFORMITY** around **BEST PRACTICE** for **KNOWN** and **PREDICTABLE** situations to achieve **EFFICIENCY**



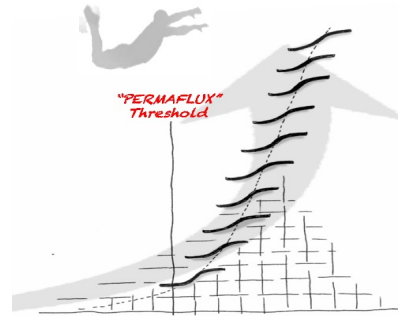
Emergent World
"Figure-It Out"



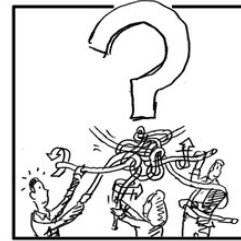
"GENERATIVE" learning focused on driving **COLLECTIVE** human **CREATIVITY** around **NEXT PRINCIPLES** for **UNKNOWN** and **UNPREDICTABLE** situations to achieve **SUSTAINABILITY**

TRAVERSING Learning's LIMINAL Space

Productive



Generative



"Find-it-Out"

<->

"Figure-it-Out"

"Learning/Objective"

<->

"Problem/Opportunity"

"Content Creation"

<->

"Context Curation"

"Productive Conformity"

<->

"Generative Co-Creativity"

"Teaching to Imitate"

<->

"Learning to Innovate"

"Subject Matter Experts"

<->

"Problem Solving Networks"

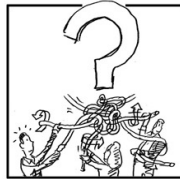
"Learning Before Doing"

<->

"Learning While Doing"

THIRD Pause to PONDER

How might we **OVERCOME** our
limiting **ORTHODOXIES** about what
LEARNING MEANS to prepare
HUMANITY for **LIFE BEYOND** the
PERMAFLUX THRESHOLD?



The Liminal
Space

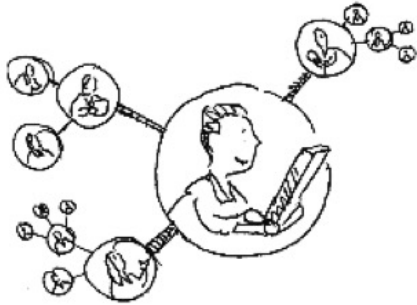
"PERMAFLUX"
Threshold
The Permaflux
Threshold

Generative
Learning

Collective
Sense Making



A Learning **INSIGHT** from Jay Cross...

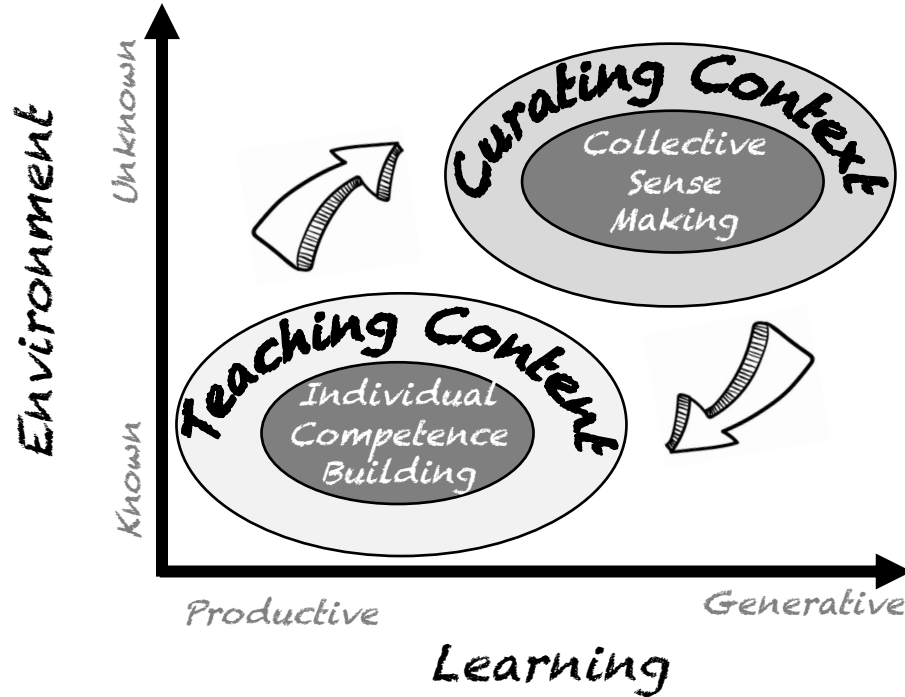


Schooling has **CONFUSED** us into thinking that learning is equivalent to **POURING KNOWLEDGE** into **PEOPLE'S HEADS.**

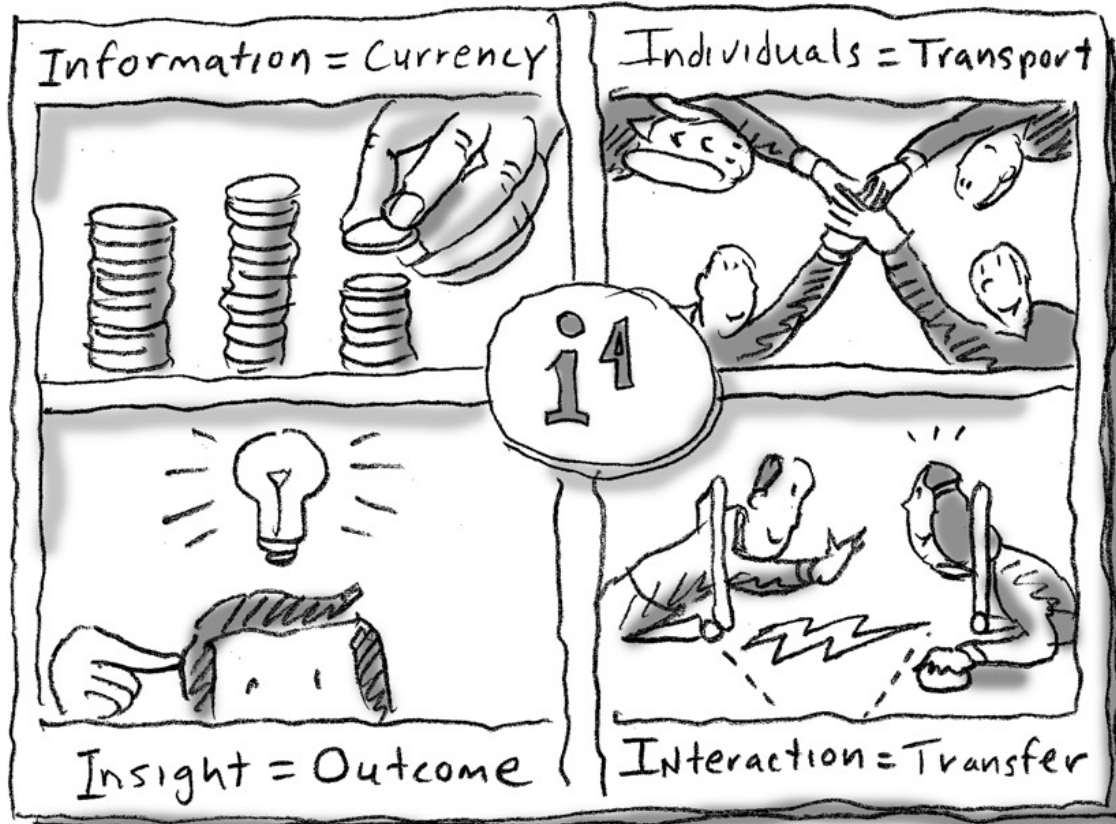
It's more practical to think of learning as **OPTIMIZING OUR NETWORKS.**



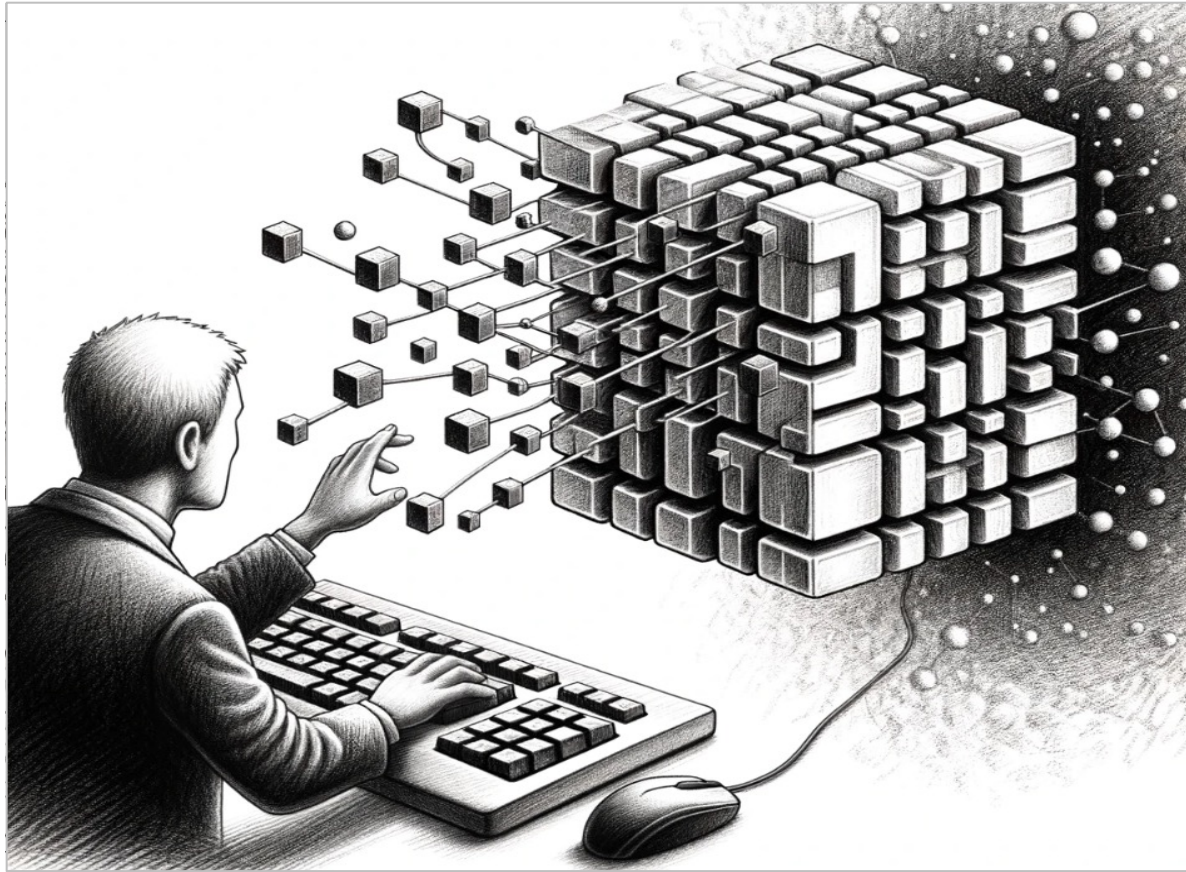
LEARNING = INDIVIDUAL COMPETENCE BUILDING + COLLECTIVE SENSE MAKING



Developing **SHARED INSIGHT**: The *i4* Model

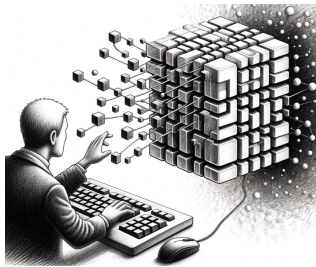


Leveraging **CO-INTELLIGENCE**: The **HUMACHINE** Interface



FINAL Pause to PONDER

Can we **CULTIVATE** learning
HUMACHINE LEARNING
ENVIRONMENTS that foster
collective **SENSE MAKING?**



Making Learning **MEANINGFUL**

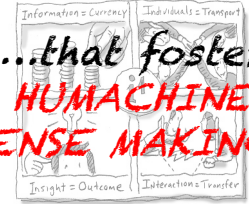
To successfully
traverse the
**Liminal
Space...**

...and survive and
thrive beyond
the **Permaflux
Threshold...**

...we must curate
**Generative Learning
Environments...**



...that foster
**HUMACHINE
SENSE MAKING!**



Go Raibh Mile Maith Agat!

